

Architectural Wall Cladding Solutions
Illusions Colour Chart

larson[®]

Metal Panels for Architectural Envelopes

larcore[®]

Aluminium Honeycomb Panels for Architectural Envelopes

Transforms ideas into reality



Alucoil[®]
Grupo Alibérico



Cité des Civilisations du Vin (Bordeaux, France)
HOLO Gold Silver
 Architect: XTU

larson® & larcove®

HOLO FINISHES

The survival of any species is very related to the capacity to adapt to the environment. **Alucoil®** has been inspired by the ease of chameleons to change their image to create this range of Holo finishes, where a finish becomes two and even three different colours depending on how the light affects the façade.

Eyesight different

#change colours
 #iridescent

ALUMINIUM RANGE: HOLO



Holo **PURE WHITE GOLD 90G**
 (ES1708)



Holo **RED GREEN 90G**
 (ES1627)



Holo **OPAL BLUE GREEN 90G**
 (ES1560)



Holo **IRIODIN GOLD 30G**
 (ES1861)



Holo **GOLD SILVER 30G**
 (ES1711)



Holo **GREY PINK 90G**
 (ES1488)



Holo **DESERT GOLD 90G**
 (ES1995)



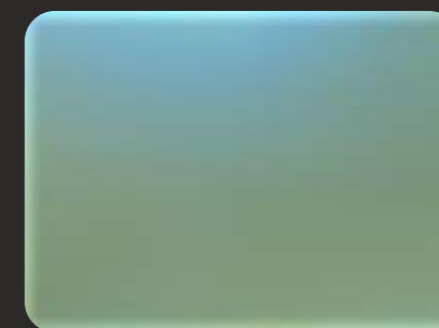
Holo **GALAXY BLUE 90G**
 (ES1361)



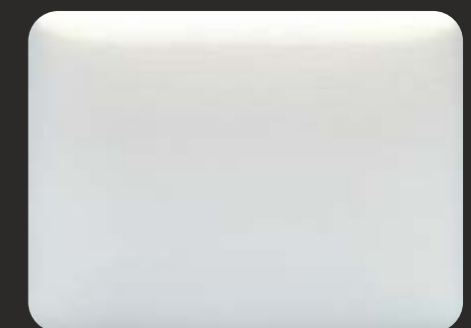
Holo **RED ORANGE 90G**
 (ES1666)



Holo **BLUE GOLD 80G**
 (ES1613)



Holo **GREEN BLUE 30G**
 (ES1614)



Holo **WHITE SILVER 90G**
 (ES1388)



National College of High Speed Rail (Doncaster, UK)
ALUNATURAL Anodic Brushed Glossy
 Architect: Bond Bryan Architects

ALUNATURAL FINISHES

Because sometimes there is no better finish than the one given by our surroundings, the range of Alunatural finishes offer different types of reflection, sharpness and even colours depending on the desired target.

Reality Effect

#reflectioncolours
 #sharpnesscolours

larson® & larcove®

ALUMINIUM RANGE: ALUNATURAL



Alunatural **GOLD BRUSHED 60G**
 (ES1544)



Alunatural **ELOX UMBER TL 10G**
 (ES2033)



Alunatural **CHAMPAGNE BRUSHED 90G**
 (ES1581)



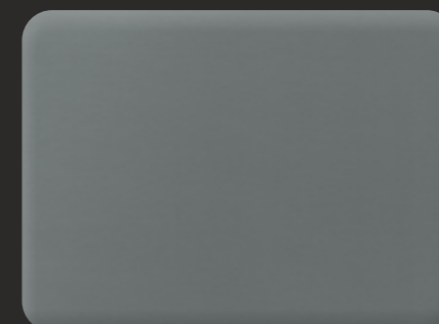
Alunatural **BRIGHT TL 90G**
 (ES1448)



Alunatural **ANODIC BRUSHED G. 90G**
 (ES1623)



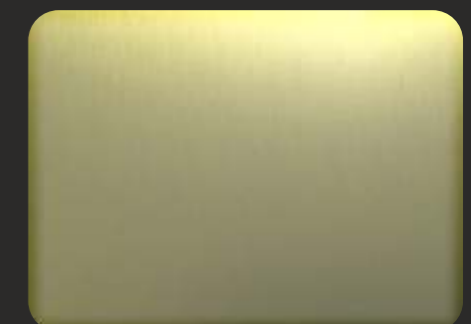
Alunatural **ANODIC BRUSHED M. 10G**
 (ES1757)



Alunatural **TITANIUM BRUSHED 10G**
 (ES1370)



Alunatural **QUARTZINC BRUSHED 10G**
 (ES1736)

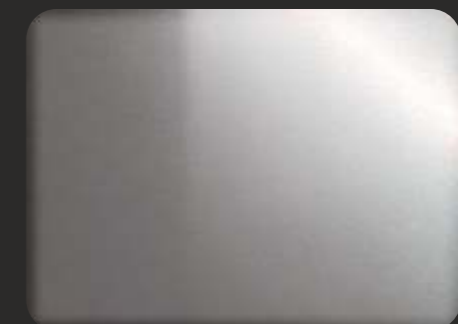


Alunatural **AMBER BRUSHED 40G**
 (ES2111)

ALUMINIUM RANGE: REAL ANODIZED



REAL ANODIZED NATURAL 8µ
 (ES1341)
 Only **larson®**



REAL ANODIZED C-BRITE 8µ
 (ES2017)
 Only **larson®**

Attention to the special characteristics of the Alunatural and Real Anodized range finishes detailed in the technical specification (request them from your **Alucoil®** contact). Alunatural and Real Anodized finishes range not recommended in aggressive environments / coast.



Weybridge Business Park (Surrey, UK)
ANODIZED LOOK BLACK C35
 Architect: Scott Brownrigg

ANODIZED LOOK FINISHES

To anodize is to protect, but also to beautify the aluminium. **Alucoil®** has a wide portfolio of finishes that match anodized finishes, keeping the folding and curving properties of composite panels. There are no limits to elegance.

Elegance in the design

#nolimitstoelegance
 #protectcolours

larson® & larcove®

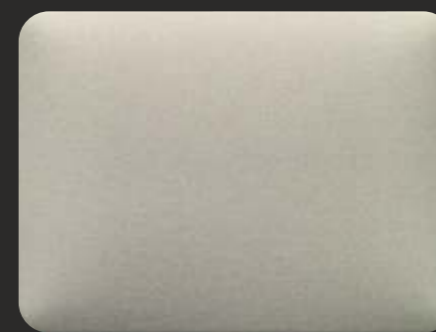


Weybridge Business Park (Surrey, UK)
ANODIZED LOOK Black C35
 Architect: Scott Brownrigg

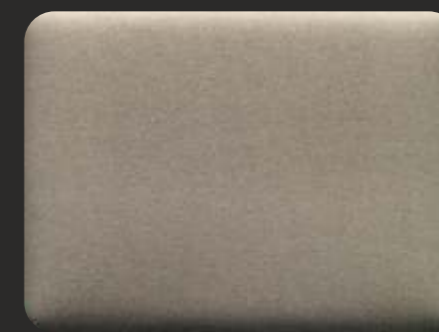
ALUMINIUM RANGE: ANODIZED LOOK



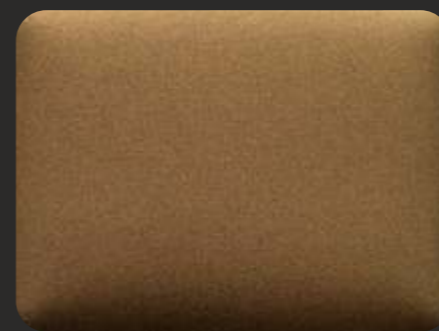
Anodized Look **SILVER EV1**
 (ES1749)



Anodized Look **SILVER BRONZE C31**
 (ES1635)



Anodized Look **LIGHT BRONZE C32**
 (ES1417)



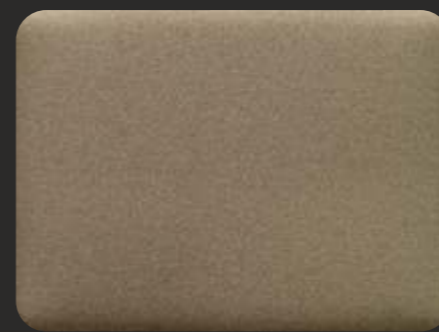
Anodized Look **MIDDLE BRONZE C33**
 (ES1444)



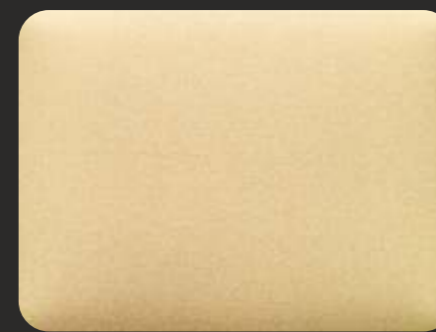
Anodized Look **DARK BRONZE C34**
 (ES1427)



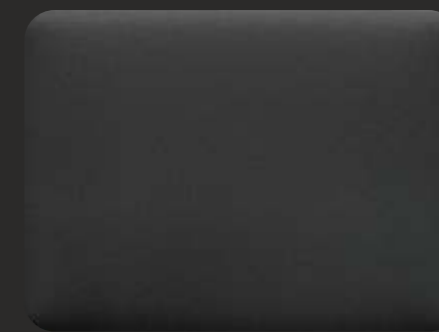
Anodized Look **BLACK C35**
 (ES1419)



Anodized Look **AUTUMN**
 (ES1633)



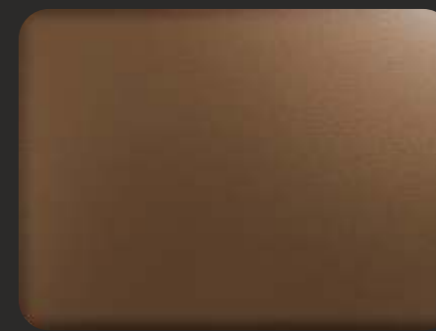
Anodized Look **ART NOUVEAU GOLD**
 (ES1483)



Anodized Look **DARK GREY**
 (ES1459)



Anodized Look **SHADOW GREY 9007**
 (ES2085)



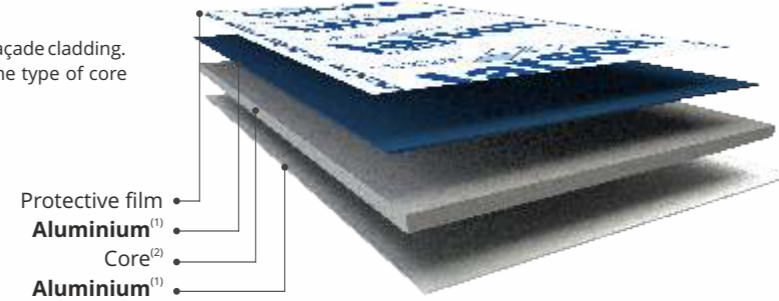
Anodized Look **DARK COPPER**
 (ES1799)



Anodized Look **CHAMPAGNE BRONZE**
 (ES1800)

larson® by Alucoil®

Composite panels are a high-tech product for architectural façade cladding. According to the external and internal metal sheets and the type of core that joins both metal sheets the panel can be:



⁽¹⁾ With the **Metals** range the aluminium sheets are replaced for stainless steel, copper, brass or zinc sheets.
⁽²⁾ There are 3 types of core depending on the required fire rating in each country.

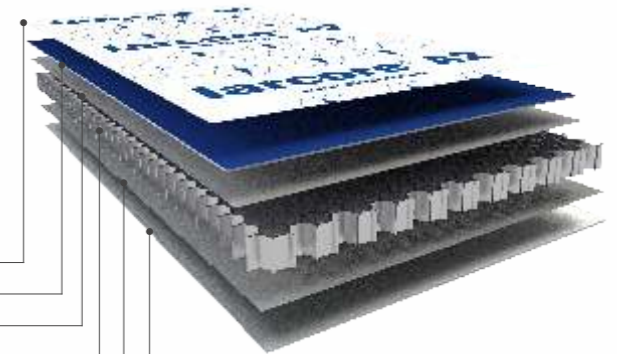
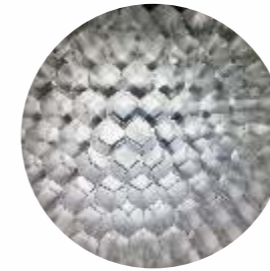
larson® A2 panel was developed for projects in which the highest fire classification is required. A2-s1, d0 classification (EN 13501-1).
larson® FR panels are formed with a FR mineral core that delays its combustion. B-s1, d0 classification (EN 13501-1).
Alucoil® also manufactures a composite panel bonded with a polyethylene PE core. This product is meant to be used only on low rise



Hotel d'agglomération (Bayonne, France)
larson® HOLO Gold Silver
 Architect: Gardera-D

larcore® A2 by Alucoil®

Aluminium honeycomb panels were developed for architectural façade cladding. It is an extremely lightweight and rigid panel which is fire proof, non-toxic, recyclable, insulating and energy efficient. A perfect panel for large modulation with the possibility of choosing among an infinite range of finishes.



Protective film
Aluminium
 Bonding layer
Aluminium Honeycomb Core
 Bonding layer
Aluminium

Fire Reaction Classification CLASS A2-s1, d0 EN 13501-1



NEW WEB

Alucoil® Design

Grupo Alibérico

Endless Architectural Design Possibilities



www.alucoildesign.com



Orygen hospital (Melbourne, Australia)
larcore® A2 METALS Zinc Red, Zinc Green & Zinc Slate
 Architect: Billard Leece Partnership

HMC School Rotterdam (Rotterdam, Holland)
TEXTURED BASALT
RAL 2001 & 7016
Architect: RoosRos Architecten



TEXTURED & DESIGN FINISHES

Why be satisfied with any kind of finish if we can match the desired texture with the maximum coating quality?
The range of customized colours mimics the touch of ceramics, the oxide of metals, the texture of basalt all with the durability and lightweight qualities of a composite panel.

Projects with personality #customized #exclusive

larson® & larcore®



ALUMINIUM RANGE: TEXTURED & DESIGN



Textured **OXIDE 1**
(ES1869)



Textured **OXIDE 2**
(ES1868)



Textured **ROUGH WHITE**
(ES1924)



Textured **ROUGH SILVER**
(ES1950)



Textured **ROUGH GREY PEARLS**
(ES1475)



Textured **ROUGH SLATE**
(ES1783)



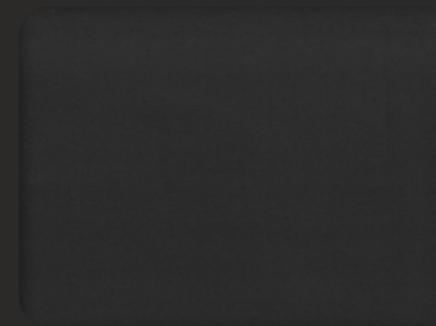
Textured **GLISTENING SNOW**
(ES1598)



Textured **GLISTENING SAND**
(ES1649)



Textured **BASALT**
(ES1652)



Textured **JET BLACK**
(ES2012)

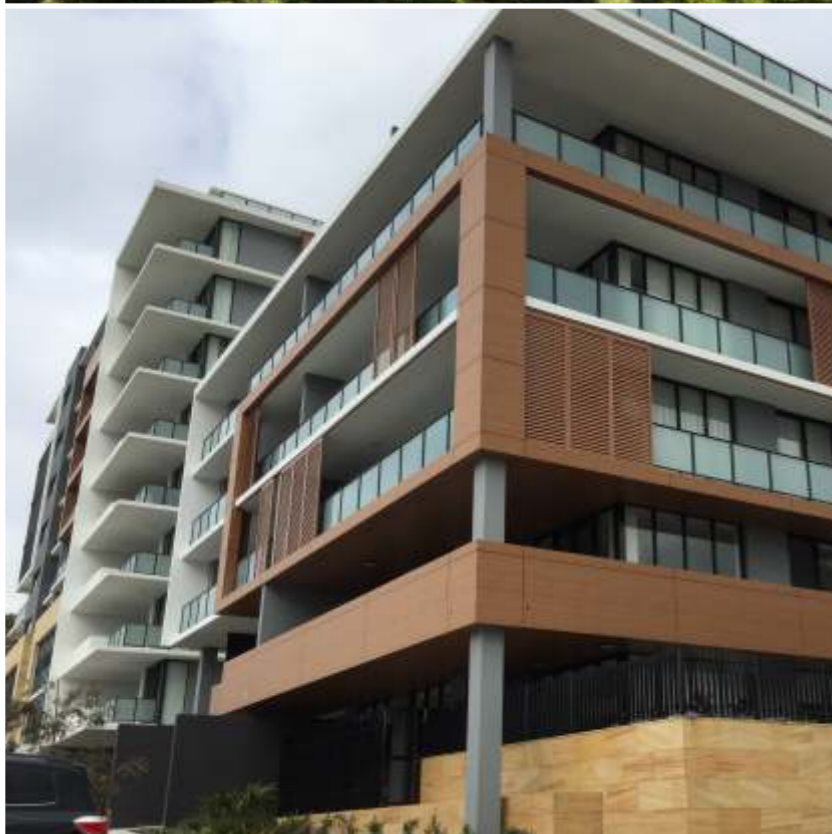


Design **SPOTTED CONCRETE**
(ES1689)



Design **TRAVERTINO**
(ES1674)

Projects with personality #customized #exclusive



Design **WEATHERED ZINC 1**
(ES1327)



Design **WEATHERED ZINC 2**
(ES1540)



Design **CORTEN STEEL 2**
(ES1528)



Design **WOOD COLONIAL WALNUT**
(ES1333)



Design **WOOD COLONIAL RED**
(ES1482)



Design **WOOD DARK WENGE**
(ES1463)



Design **WOOD LIGHT WENGE**
(ES1665)



Design **WOOD ELEGANT OAK**
(ES1535)



Design **WOOD ENGLISH CHERRY**
(ES1524)

ALUMINIUM RANGE: ACM PVC 200μ



Design **PVC WOOD CONCRETE OAK**
(ES2107)



Design **PVC WOOD ALPINO OAK**
(ES2108)



Design **PVC WOOD MALTA OAK**
(ES2109)

Consult possibilities and properties concerning ACM PVC 200μ



METALS RANGE

Natural appearance makes these composites the ideal ecological solution and provides the sensation of liveliness from nature's finest elements.

Possibilities with **larson**® composite panels:

- a) **Stainless Steel**
- b) **Copper**
- c) **Brass**
- d) **Zinc**

Possibilities with **larcove**® A2 Honeycomb panels:

- a) **Zinc**

larson® & **larcove**®

Isenberg School of Management Business Innovation Hub (Amherst, MA, United States)

METALS COPPER

Architect: Bjarke Ingels Group



METALS RANGE



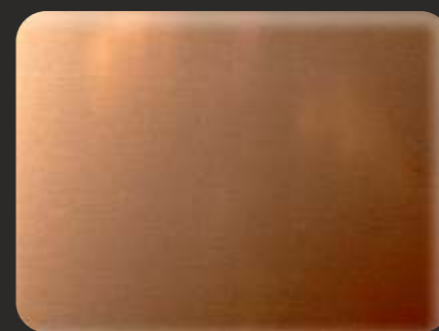
Metals **STAINLESS STEEL 2D**
Only **larson**®



Metals **STAINLESS STEEL WF30**
Only **larson**®



Metals **STAINLESS STEEL BRILLIANT BA**
Only **larson**®



Metals **COPPER NATURAL**
Only **larson**®



Metals **BRASS NATURAL**
Only **larson**®



Metals **ZINC BLUE**
(ES1522)



Metals **ZINC SLATE**
(ES1274)



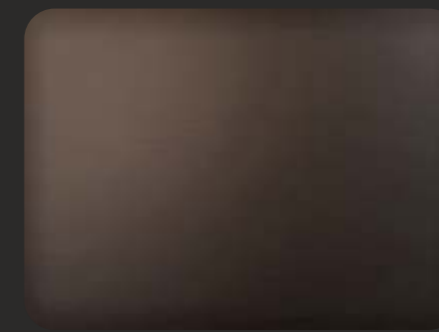
Metals **ZINC RED**
(ES1275)



Metals **ZINC GREEN**
(ES1523)



Metals **ZINC GOLD**
(ES2096)



Metals **ZINC BROWN**
(ES1556)

Alucoil® S.A.U. reserves the right to change or remove information contained in this brochure without prior notice.
Please visit us at www.alucoil.com to check the latest version.



Alucoil®

Grupo Alibérico

Specialists in the manufacture of
Advanced Materials for Architecture

Polígono Industrial de Bayas C/ Ircio. Parcelas R72-77
09200 Miranda de Ebro, Burgos - SPAIN
Tel.: +34 947 333 320 - Fax: +34 947 324 913
info@alucoil.com

www.alucoil.com