

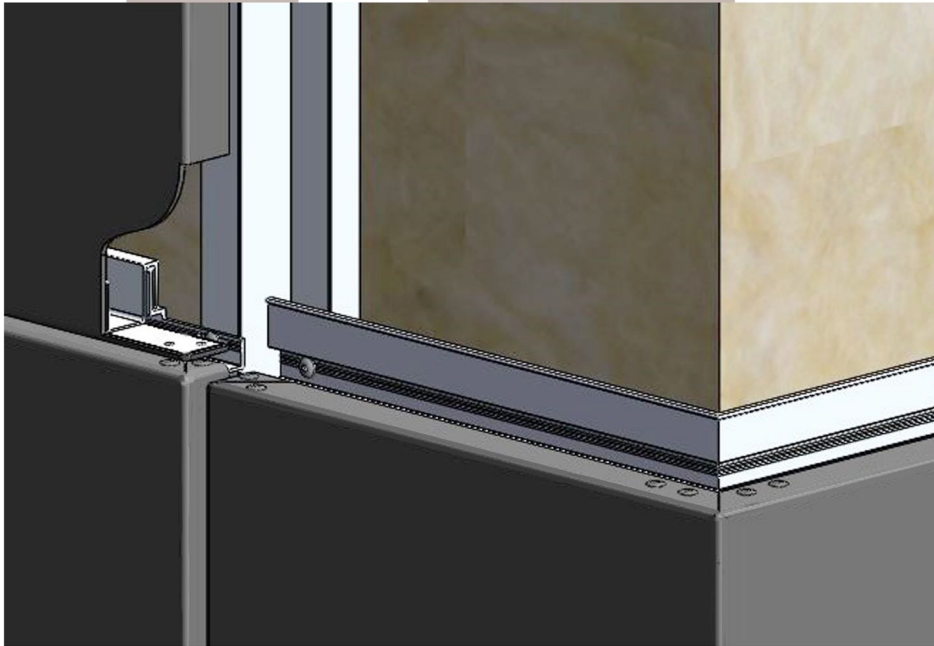


HORIZON range solution

INTERLOCKING INSTALLATION OF MODULES FITTED WITH PROFILES

- Suited to a horizontal façade layout in as well as for soffits
- Especially adapted to **brick style joint layouts**
- Easy installation after modifying the basic profile
- Allows installation of **very wide elements**
- Minimizes the need for secondary substructure and **reduces installation time**
- Provides **very deep vertical recessed joints**, allows **projecting vertical metal profiles** or other fixing elements to pass through (solar shading, perforated screening, ..)
- Offers option of selecting the **width of the vertical joints**

The BORNEO® solution complies with the requirements of the CSTB (code of practice for building works) depending on the material used and the type of substrate.



HORIZON
range solution

- 1 Substrate
- 2 Insulation
- 3 Right angle fixing bracket
- 4 Secondary substructure
- 5 Lower tray panel profile
- 6 Upper tray panel profile
- 7 Metal or composite cladding

